



About us..

GBUK Healthcare established 20 years ago.

We're a Yorkshire based business employing over 110 people.

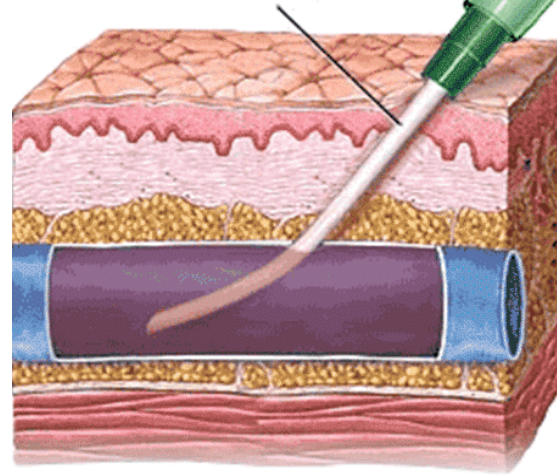
45,000 square foot warehouse

Off site contingency warehouse up and running in 4 hours

Top 20 supplier to the NHS, delivering over 300,000 products to the NHS every day.



GBUK Healthcare
Part of the GBUK Group 

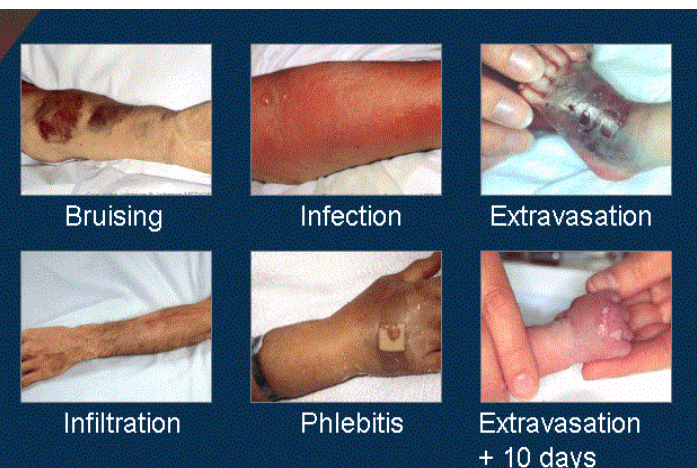


Common Challenges

80% of hospitalised patients received IV therapy.

Up to 70% can develop Phlebitis

- Mechanical Phlebitis / Infection
- Haematoma
- Vein Integrity
- Blood leakage / contamination
- Needle Stick Injuries
- Venepuncture attempts
- No standardisation



GBUK Cannula Range

Full range & extension lines

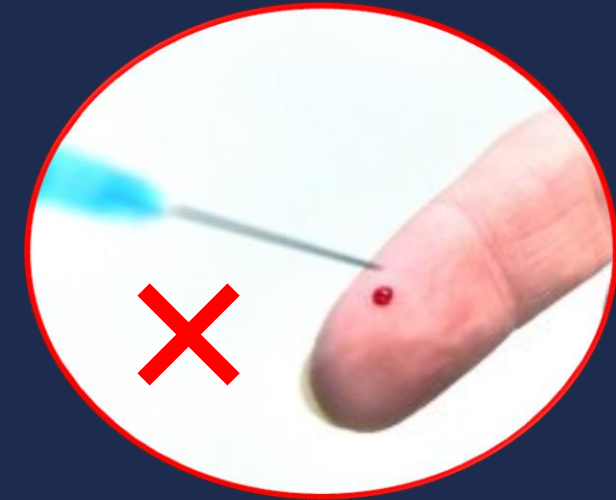
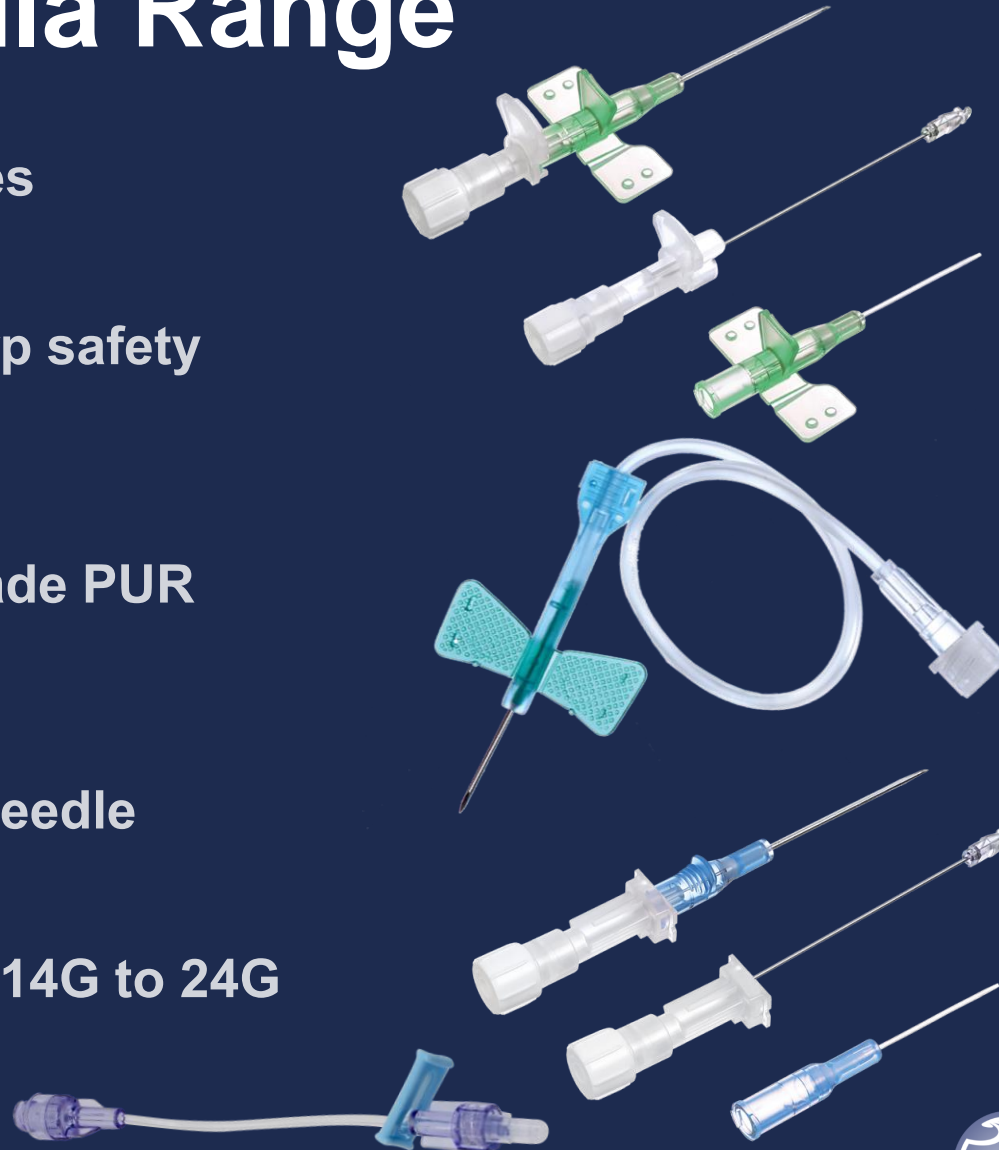
Self activating needle sharp safety

Designed to reduce blood droplets

3rd Generation Medical Grade PUR
Cannula

Japanese back cut bevel needle

Complete range of sizes – 14G to 24G



GBUK Healthcare
Part of the GBUK Group

Ported Cannula

(Commonly used in Theatres)

Adva Flashback Technology – Blood flow in the cannula instantly confirms successful venepuncture. Reducing no. of venepuncture attempts

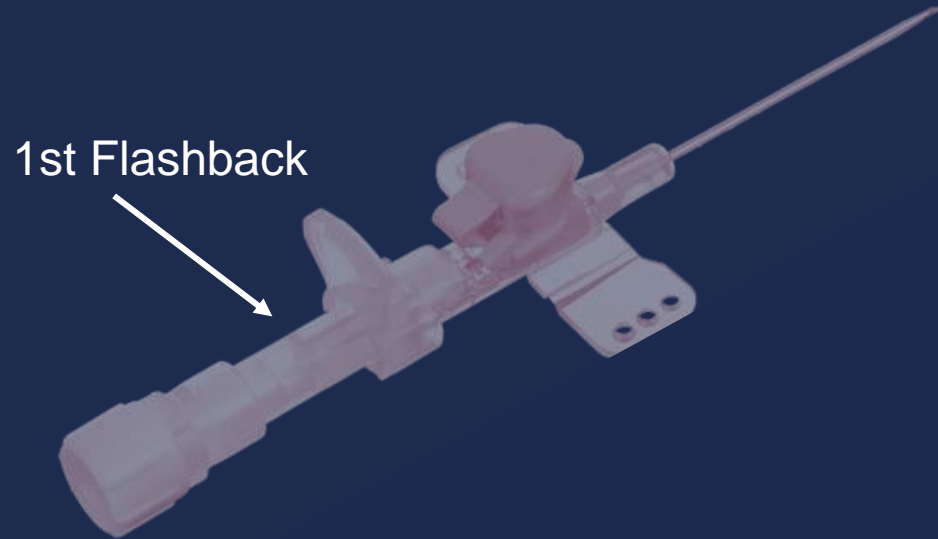
3rd Generation Medical Grade PUR - Soft cannula increases patient comfort and reduces irritation.

Snap Fit Cap – allows easier access to the port reducing mechanical phlebitis.

Hydrophobic Cap - Prevents blood leakage on insertion



Traditional Flash Back

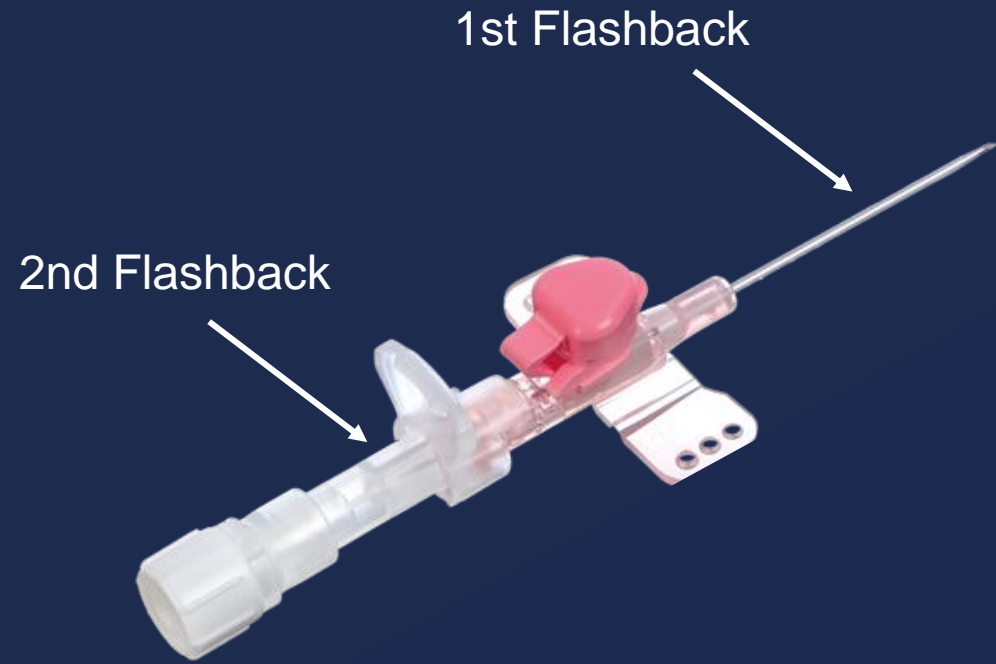


Indicates successful venepuncture of the vein.

In a traditional cannula the flash back (of blood) appears behind the hub, at the back of the cannula. This means it's difficult to see the flash back and there's also a time delay for blood to pass through the cannula.

Vein diameter is typically between 0.6 to 3.2mm. This time delay means clinicians could advance the needle through the vein wall and out the other side of the vein.

GBUK Cannula's Flash Back



GBUK Cannula's flash back occurs in the cannula first, instantly confirming successful venepuncture.

- Right first time
- Reducing venepuncture attempts
- Reducing likelihood of haematoma
- Maintains vein integrity
- Reduces the risk of infection and contamination.

Available with GBUK Ported, Integrated and Blood Control Cannulas



Our
GBUK Healthcare
Part of the GBUK Group
Customers



NHS
North East
Ambulance
Service
NHS Foundation
Trust



United Lincolnshire
Hospitals
NHS Trust



Wrightington, Wigan and
Leigh Teaching Hospitals
NHS Foundation Trust



Lancashire Teaching
Hospitals
NHS Foundation Trust



East Cheshire
NHS Trust

Switched to GBUK
in **2020**



Blackpool
Teaching Hospitals
NHS Foundation Trust

Sheffield Children's **NHS**
NHS Foundation Trust

NHS
Oxford University Hospitals
NHS Foundation Trust

NHS
East Cheshire
NHS Trust

Mid Cheshire Hospitals **NHS**
NHS Foundation Trust

NHS
East and North Hertfordshire
NHS Trust

NHS
The Queen Elizabeth
Hospital King's Lynn
NHS Foundation Trust

NHS
Brighton and Sussex
University Hospitals
NHS Trust

NHS
Doncaster and Bassetlaw
Teaching Hospitals
NHS Foundation Trust

NHS
Manchester University
NHS Foundation Trust

NHS
Northern Lincolnshire
and Goole
NHS Foundation Trust

NHS
Gloucestershire Hospitals
NHS Foundation Trust

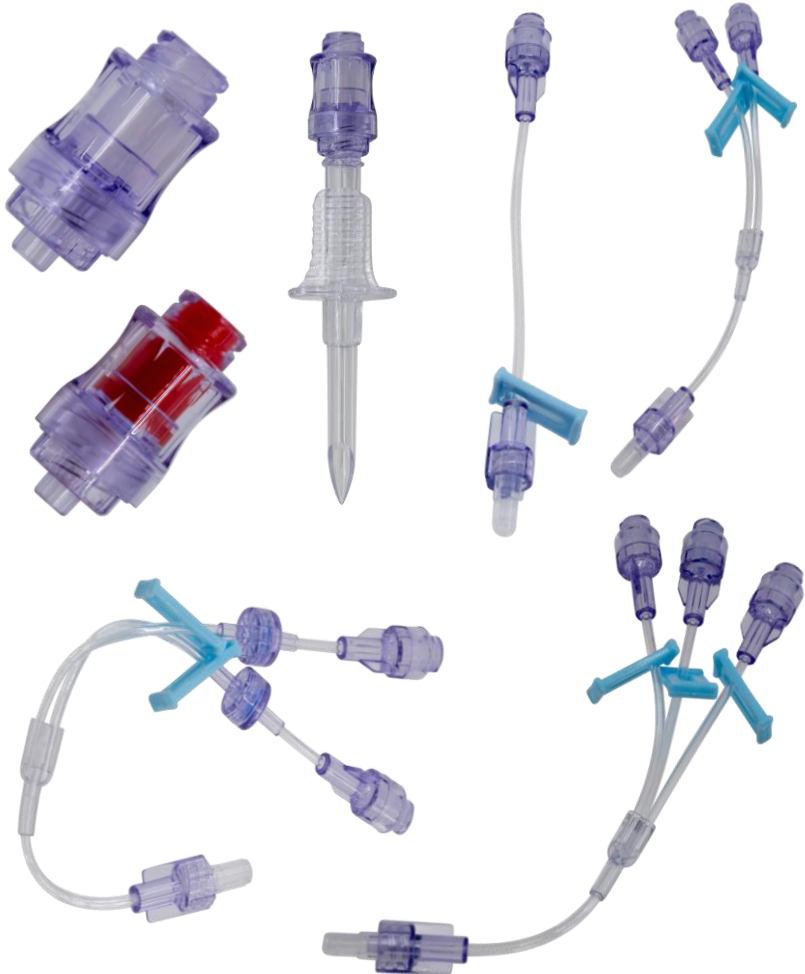
NHS
United Lincolnshire
Hospitals
NHS Trust

NHS
Aintree University Hospital



The rest of the Vascular Access range

Needle Free Connectors
IV Extension Sets
Blood Collection



Introduction



educare
Part of the GBUK Group

GBUK Healthcare
Part of the GBUK Group

Venepuncture
& Cannulation

Workbook

E-Learning & Workbook

- 8 Modules
- Video based
- Easy to follow
- Evidence based learning
- With full assessment
- ***Demo video available*

Accompanying Workbook

- Works in parallel with the e-learning package
- Provides more information for the detailed learner
- Ideal for those that like to write notes

Ongoing support

- E-learning
- Work book
- Team of 9 including 3 IV specialists.
- Monthly support when required and we're happy to help train groups of new staff.
- Top 20 supplier to the NHS, 2 days delivery direct and through NHSSC. With a warehouse in the UK (Not abroad)



Covid Safe

- Safety first
- Bare below the elbow.
- Dress code Scrubs/Polo's
- Hospital shoes
- PPE – Masks, Hand Sanitizers
- Sample handling

Trial

- ✓ Every customer is different – we will agree a plan and do all the work for you.
- ✓ Team size range from 2 to 9
- ✓ Every member of the team is DBS cleared, MIA accredited and Covid Safe
- ✓ We're always mindful we're in a hospital environment where your clinicians primary focus is caring for their patients.
- ✓ Key departments generally A&E, Theatres and Maternity.
- ✓ At the end of the trial you will receive a detailed report along with the raw data collected.

Summary

- Enhancing patient care
- Instant flashback
- Improve practices
- Unparalleled support from GBUK – Training Team, E-Learning, Work Book, Persons dedicated to you.
- Experienced conversion team.
- Save you time - so you can focus on what you do.
- Save you money – better patient care and standardisation



Thank you

**Any
Questions?**